

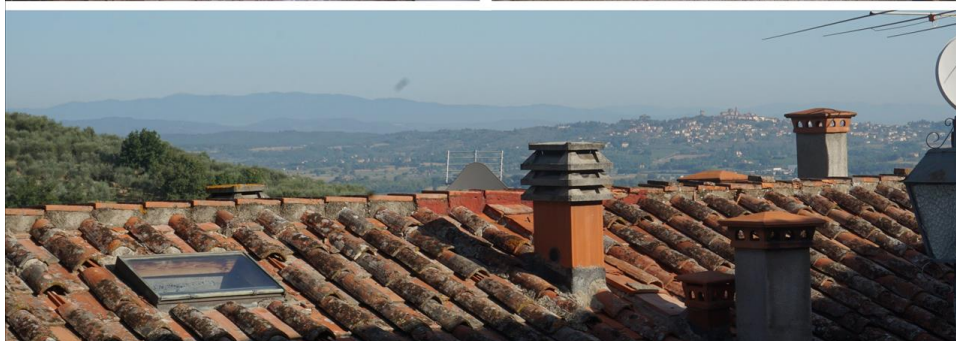
Townhouse for Sale in Sinalunga (SI)

59.000 €

Ref: TT175



Size : 60 sqm
Rooms : 2
Bedrooms : 1
Bathrooms : 1
Energy class : G
IPE : 300

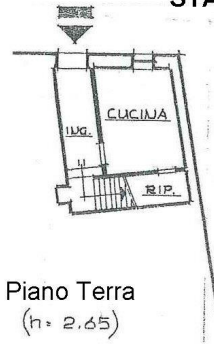


SINALUNGA (SI), at an altitude of 360 m s.l.m. and 7 km from the A1 motorway exit of Valdichiana, sale of townhouse in the historic center in a private location, independent access with easy parking. The surface measures about 60 square meters on two levels. Panoramic views. On the ground floor it has an entrance hall, kitchen / dining room with utility room, internal staircase leading to the upper floor, where we find the bedroom and the bathroom with tub and laundry. The building was renovated in the 1970s and is in a good general state of preservation, including the roof, although it needs to be renovated to include services and facilities. The building is equipped with an independent methane heating system. The window frames are made of wood (Douglas fir) with simple glass and shutters. The flooring is in marble grit and the floors are in latero / cement. Request Euro 59000 negotiable. (Energy Class: G and IPE> 300 Kwh / m2 year). Ref. TT175





STATO ATTUALE



Piano Terra
(h. 2.65)



Piano Primo
(h. 2.65)

ipotesi di MODIFICA

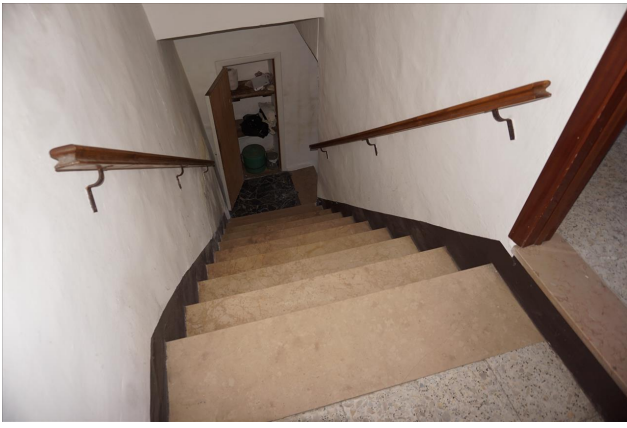


Piano Terra
(h = 2.65)



Piano Primo
(h = 2.65)







IL CASTELLO IMMOBILIARE S.R.L.
Corso Garibaldi, 18/20 - 53047 Sarteano (SI)
P.IVA: 01070020522
Tel: 0578 266836 / Email: info@ilcastelloimmobiliare.it